

RESEARCH

Open Access



Association of insulin use with LV remodeling and clinical outcomes in diabetic patients with heart failure and reduced ejection fraction: assessed by cardiac MRI

Ke Shi¹, Ge Zhang^{1,2}, Hang Fu³, Shan Huang^{1,3}, Hua-Yan Xu³, Yue Gao¹, Rui Shi¹, Wei-Feng Yan¹, Wen-Lei Qian¹, Yuan Li¹, Ying-Kun Guo³ and Zhi-Gang Yang^{1*}

Abstract

Background Insulin is commonly used in type 2 diabetes mellitus (T2DM) to achieve glycemic control. However, recent evidence showed that insulin use is associated with poor outcomes in the context of heart failure (HF). Since heart failure with reduced ejection fraction (HFrEF) accounts for approximately 50% of cases in the general HF population, we aimed to evaluate the effect of insulin treatment on left ventricular (LV) remodeling and contractility abnormalities in a HFrEF cohort and assess whether insulin was a predictor of adverse outcomes in this entity.

Methods A total of 377 HFrEF patients who underwent cardiac MRI were included and divided according to diabetes status and the need for insulin treatment. LV structural and functional indices, as well as systolic strains, were measured. The determinants of impaired myocardial strains were assessed using linear regression analysis. The associated endpoints were determined using a multivariable Cox proportional hazards model.

Results T2DM patients on insulin displayed a higher indexed LV end-diastolic volume and LV mass than those with T2DM not on insulin or those without T2DM, despite similar LV ejection fractions, accompanied by a higher three-dimensional spherical index ($P < 0.01$). Worse longitudinal and circumferential peak systolic strain was shown to occur in T2DM patients on insulin ($P < 0.01$). Insulin treatment was independently associated with impaired magnitudes of systolic strain. The median follow-up duration was 32.4 months (IQR, 15.6–43.2 months). Insulin treatment remained consistently associated with poor outcomes after adjustment for established confounders, with an adjusted hazard ratio of 3.11; (95% CI, 1.45–6.87; $P = 0.009$) in the overall cohort and 2.16 (95% CI, 1.08–4.59; $P = 0.030$) in the diabetes cohort.

Conclusions Insulin may further lead to adverse LV remodeling and contractile dysfunction in the context of HFrEF with T2DM. Considerable care should be taken when treating HFrEF patients with insulin.

Keywords Heart failure with reduced ejection fraction, Insulin, Left ventricular remodeling, Contractile dysfunction

*Correspondence:

Zhi-Gang Yang
yangzg666@163.com

¹Department of Radiology, Functional and Molecular Imaging Key Laboratory of Sichuan Province, West China Hospital, Sichuan University, Chengdu, Sichuan, China

²Department of Radiology, Sichuan Cancer Center, School of Medicine, Sichuan Cancer Hospital and Institute, University of Electronic Science and Technology of China, Chengdu, Sichuan, China

³Department of Radiology, Key Laboratory of Birth Defects and Related Diseases of Women and Children of Ministry of Education, West China Second University Hospital, Sichuan University, Chengdu, Sichuan, China



© The Author(s) 2023. **Open Access** This article is licensed under a Creative Commons Attribution 4.0 International License, which permits use, sharing, adaptation, distribution and reproduction in any medium or format, as long as you give appropriate credit to the original author(s) and the source, provide a link to the Creative Commons licence, and indicate if changes were made. The images or other third party material in this article are included in the article's Creative Commons licence, unless indicated otherwise in a credit line to the material. If material is not included in the article's Creative Commons licence and your intended use is not permitted by statutory regulation or exceeds the permitted use, you will need to obtain permission directly from the copyright holder. To view a copy of this licence, visit <http://creativecommons.org/licenses/by/4.0/>. The Creative Commons Public Domain Dedication waiver (<http://creativecommons.org/publicdomain/zero/1.0/>) applies to the data made available in this article, unless otherwise stated in a credit line to the data.

Introduction

Heart failure (HF) has now become a global health burden, affecting an estimated 23 million people [1]. The clinical outcome of HF is still poor, and optimal treatment for both HF and its common comorbidities is equally important to lower the risk of hospitalization or death [2]. HF and type 2 diabetes mellitus (T2DM) often occur concomitantly, and both HF and T2DM closely interact with each other. The onset of one disease promotes a worse prognosis and further disease progression in the other [3]. Although the benefits of standard treatments are similar in HF patients irrespective of T2DM status, controversy remains about how to safely achieve and maintain glycemic control in HF patients with T2DM [3–5].

As monotherapy or in combination with other glycemic agents, insulin is a commonly used effective treatment for T2DM to achieve glycemic control. It alters renal handling of sodium, reinforcing fluid retention and triggering hyperinsulinemic hypoglycemia which might lead to myocardial ischemia and tachycardia by activating the sympathetic nervous system [5, 6]. Previous data from several registries and multicenter studies have demonstrated the association between insulin use and adverse outcomes in patients with chronic HF and T2DM, suggesting the detrimental effect of insulin on left ventricular (LV) remodeling in patients with HF comorbid with T2DM [2, 7–11].

Given that heart failure with reduced ejection fraction (HFrEF) accounts for approximately 50% of cases in the general HF population and is increasing in prevalence in the aging population, it is necessary to specifically clarify the adverse LV remodeling and mechanical alterations in patients with HFrEF and T2DM who take insulin [12]. However, to the best of our knowledge, little is known about the effect of insulin treatment on LV remodeling or on contractility abnormalities in this entity. Cardiac MRI has now been acknowledged as the optimal imaging method for comprehensive assessment of cardiac geometry and myocardial mechanics. Accordingly, the present study was designed to investigate the potential role of insulin use on LV remodeling and contractile abnormalities by cardiac MRI and to assess whether this therapy is associated with poor outcomes in patients with comorbid HFrEF and T2DM.

Methods

Data collection and study design

We performed an observational study to investigate the association between insulin treatment and outcome in patients with T2DM who develop HFrEF. The diagnosis of HFrEF was made according to the guidelines from the European Society of Cardiology (2021) [1]. Patients were initially enrolled between January 2015 and December

2021 via a hospital admission or consultation at an outpatient clinic with the presence of symptoms and/or signs of HF, an elevated amino-terminal pro-B-type natriuretic peptide (NT-proBNP), and a reduced LV ejection fraction (LVEF \leq 40%) on cardiac MRI. Subjects who were 18 years old or under or had acute coronary syndrome, severe arrhythmia, or incomplete MRI images were excluded. The overall study cohort was further stratified by diabetes status and the need for insulin treatment: (1) the non-DM group; (2) the T2DM group without insulin treatment; and (3) the T2DM group with insulin treatment. Demographics, clinical characteristics, and laboratory measurements at baseline were collected from electronic clinical records. All patients were followed for the primary composite outcome of HF readmission, all-cause mortality and heart transplantation. Follow-up data were obtained from electronic medical records or phone calls to patients or family members. Follow-up duration was calculated as either the time from cardiac MRI to the occurrence of any endpoint or June 2022 (the last follow-up date).

This study was approved by the Biomedical Research Ethics Committees of our hospital and was complied with the Declaration of Helsinki. Written informed consent was waived because of the retrospective nature of the study. All medical data were protected with full confidentiality and used only for the purpose of the present study.

MRI protocol and imaging postprocessing

MRI was performed on a 3-Tesla scanner (MAGNETOM Skyra/Tim Trio; Siemens Healthcare, Erlangen, Germany). Cine imaging was performed in the two-chamber long-axis view, four-chamber long-axis view, and 8–12 contiguous slices in the two-chamber short-axis view from the mitral valve to the LV apex using a retrospectively segmented ECG-gated balanced steady state free precession sequence with the following parameters: repetition time=2.81 ms; echo time=1.22 ms; slice thickness=8.0 mm; flip angle=40°/50°; acquisition matrix=166 \times 208 pixels; and field of view=340 \times 284 mm². Twenty-five frames were reconstructed per breath-hold acquisition for cine images.

All images were analyzed using commercially available CVI⁴² software (Circle Cardiovascular Imaging, Inc., Calgary, Alberta, Canada) by two investigators (K.S. with 10 years and G.Z. with 8 years of cardiac MRI experience) who were blinded to each other's findings. The interobserver reproducibility of measurement for the MRI indices was good, with intraclass correlation coefficients (ICCs) ranging from 0.90 to 0.93. In a series of short-axis images, endocardial and epicardial borders were manually drawn at the LV end-diastolic and end-systolic phases, respectively. LV function parameters, including

EF, end-diastolic volume (EDV), end-systolic volume (ESV), and stroke volume (SV), were automatically calculated. LV mass (LVM) was assessed by measuring the area between the endocardial and epicardial borders in each of the short-axis slices. LV papillary muscles were included in the LVM but not in the LV volume. LV function parameters and LVM were indexed to body surface area [13]. LV length was measured at the LV end-diastolic phases in a four-chamber view of long-axis images. The three-dimensional spherical index (3D-SI) was calculated as previously described [14].

A stack of short-axis cine images combined with long-axis images were loaded into the feature-tracking module for LV systolic strain analysis. We delineated LV endocardial and epicardial borders at the end-diastolic phases (reference phase) of all cine images. The short-axis reference points were inserted at the upper and lower septal insertion of the LV for global analysis of strain. Then, the software automatically traced and drew the contours throughout the remaining cardiac cycle. During the systolic phase, the LV shortens in the longitudinal and circumferential directions, causing negative global longitudinal peak strain (PS) and circumferential PS, whereas thickening in the radial direction causes positive global radial PS [15].

Statistical analysis

Statistical analyses were performed using SPSS (IBM SPSS Inc., Armonk, New York, USA) and Prism (GraphPad software Inc., San Diego, California, USA). The normality of the data was determined using the Shapiro–Wilk test. Data are expressed as means with standard deviations or medians with interquartile ranges (IQRs) for continuous variables and frequencies for categorical variables. Clinical and MRI variables were compared among the non-DM, DM not on insulin, and DM on insulin subgroups using one-way analysis of variance, followed by the Bonferroni post hoc test, Kruskal–Wallis test, or chi-square test (Fisher’s exact test), as appropriate. The determinants of impaired LV contractile function were assessed separately in the overall cohort and in the T2DM cohort using linear regression analysis. Candidate variables with $P < 0.10$ in the univariable analysis and absence of collinearity were included in building the multivariable models. Long-term adverse outcomes were assessed using Kaplan–Meier survival analysis and compared among the groups using the log-rank test. The variables associated with adverse outcomes were determined using a multivariable Cox proportional hazards model. Variables with $P < 0.10$ in univariable analysis were included as cofactors for the Cox adjustment. Differences with a two-tailed P value < 0.05 were considered indicative of significance.

Results

Baseline characteristics of the study population

In general, among the 377 patients with HF_rEF finally included in this study, 62.1% had T2DM, with one third of them prescribed with insulin. Table 1 depicts the baseline characteristics of the study population according to diabetes status and insulin use. T2DM patients with and without insulin treatment had a higher body mass index ($P = 0.005$) and systolic blood pressure ($P < 0.001$) than those without T2DM. T2DM patients who used insulin tended to be older than T2DM patients who did not use insulin and patients without T2DM ($P = 0.076$). However, sex, diastolic blood pressure, heart rate, and history of smoking and drinking were similar among the three groups, irrespective of their diabetes status and whether they were prescribed insulin (all $P > 0.05$).

Compared to non-DM patients, T2DM patients with and without insulin treatment had a higher prevalence of hypertension (HT) ($P < 0.001$) and dyslipidemia ($P = 0.002$). However, ischemic etiology of HF was comparable among the three groups ($P > 0.05$). Insulin-requiring patients had the highest levels of NT-proBNP, troponin T, fasting blood glucose and glycated hemoglobin (HbA1C) but the lowest estimated glomerular filtration rate (eGFR) across groups (all $P < 0.001$). The use of cardiovascular medications was similar among the three groups, with the exception of calcium-channel blockers ($P = 0.006$) and statins ($P = 0.005$), which were more likely to be prescribed to T2DM patients who took insulin.

Additionally, between both groups of T2DM patients, individuals on insulin treatment had a longer diabetes duration than those without ($P < 0.001$). Moreover, no significant difference was found in the oral hypoglycemic medications used between the two groups (all $P > 0.05$; Table 2).

Association of insulin with LV remodeling and abnormal myocardial mechanics

Although LVEF was similar across groups ($P > 0.05$), T2DM patients on insulin displayed higher LVEDV ($P = 0.009$), LVESV ($P = 0.015$), and LVSV ($P = 0.019$) than those with T2DM not on insulin and those without T2DM. However, when corrected for body size, these indices did not notably differ among the groups except for indexed LVEDV (DM on insulin: 173.6 ± 69.5 mL/m² vs. DM not on insulin: 153.4 ± 48.8 mL/m² vs. non-DM: 155.1 ± 42.6 mL/m²; $P = 0.014$). Moreover, LVM was greater in T2DM patients on insulin treatment than in those without insulin treatment, and LVM in both of these groups was greater than that in participants without T2DM ($P < 0.001$); the significant difference remained even when taking body size into account (DM on insulin: 92.7 ± 16.8 g/m² vs. DM not on insulin: 83.5 ± 24.6 g/m² vs. non-DM: 76.6 ± 20.7 g/m²; $P = 0.005$; Fig. 1). Finally,

Table 1 Baseline characteristics of the study population according to diabetes status and insulin use

| | Non-DM (n = 143) | Non-insulin-treated DM (n = 156) | Insulin-treated DM (n = 78) |
|-------------------------------------|------------------|----------------------------------|-----------------------------|
| Age, yrs | 55.3 ± 12.1 | 56.3 ± 12.5 | 59.1 ± 10.2 |
| Male, n (%) | 94 (65.7) | 110 (70.5) | 53 (67.9) |
| BMI, kg/m ² | 23.5 ± 4.1 | 24.9 ± 3.7* | 24.9 ± 3.5* |
| SBP, mmHg | 113.5 ± 21.8 | 120.4 ± 20.1* | 128.8 ± 22.9*† |
| DBP, mmHg | 73.6 ± 13.5 | 79.1 ± 14.0 | 78.2 ± 13.5 |
| h, beats/min | 86.1 ± 18.5 | 87.4 ± 18.7 | 85.4 ± 12.8 |
| Smoking, n (%) | 62 (43.4) | 71 (45.5) | 41 (52.6) |
| Drinking, n (%) | 40 (28.0) | 53 (34.0) | 25 (35.9) |
| HF duration, n (%) | | | |
| ≤ 1 yr | 78 (54.5) | 82 (52.6) | 42 (53.8) |
| > 1 and ≤ 5 yrs | 41 (28.7) | 45 (28.8) | 20 (25.6) |
| > 5 yrs | 24 (16.8) | 29 (18.6) | 16 (20.5) |
| DM duration, n (%) | | | |
| ≤ 1 yr | NA | 98 (62.8) | 20 (25.6) λ |
| > 1 and ≤ 5 yrs | NA | 23 (14.7) | 11 (14.1) |
| > 5 yrs | NA | 35 (22.4) | 47 (60.3) λ |
| NYHA functional class III–IV, n (%) | 105 (73.4) | 118 (75.6) | 64 (82.1) |
| Ischemic etiology of HF | 48 (33.6) | 47 (30.1) | 30 (38.5) |
| Medical history, n (%) | | | |
| HT | 35 (24.5) | 71 (45.5) § | 45 (57.7) § |
| AF | 21 (14.7) | 39 (25.0) | 14 (17.9) |
| Dyslipidemia | 28 (19.6) | 59 (37.8) § | 27 (34.6) § |
| COPD | 16 (11.2) | 13 (8.3) | 10 (12.8) |
| SAS | 5 (3.5) | 9 (5.8) | 4 (5.1) |
| Laboratory measurements | | | |
| NT-proBNP, pg/mL | 2527 (997, 5392) | 2587 (1223, 6288) | 3495 (1713, 10,059) &# |
| eGFR, mL/min/1.73m ² | 79.2 ± 23.4 | 77.6 ± 21.6 | 63.4 ± 28.9*† |
| TPN-T ng/L | 22 (12.3, 46.6) | 28.4 (16.5, 54.3) | 41.3 (23.9, 73.6) &# |
| FBG, mmol/L | 5.3 (4.8, 5.9) | 7.2 (6.2, 8.9) & | 9.5 (6.6, 13.1) &# |
| HbA1C, % | 5.8 (5.6, 6.1) | 6.9 (6.3, 7.7) & | 7.9 (7.1, 9.6) &# |
| TG, mmol/L | 1.3 ± 0.6 | 1.7 ± 0.9* | 1.6 ± 0.3* |
| TC, mmol/L | 4.0 ± 1.2 | 4.1 ± 1.2 | 3.9 ± 1.1 |
| HDL-C, mmol/L | 1.1 ± 0.3 | 1.0 ± 0.3 | 1.1 ± 0.3 |
| LDL-C, mmol/L | 2.4 ± 0.9 | 2.4 ± 0.9 | 2.2 ± 0.9 |
| Hemoglobin, g/L | 137 (126.5, 150) | 137.5 (126, 154.3) | 135.5 (106.5, 149) |
| Cardiovascular medications, n (%) | | | |
| Beta-blocker | 94 (65.7) | 112 (71.8) | 55 (70.5) |
| ACEI/ARB | 91 (63.6) | 116 (74.4) | 53 (67.9) |
| Sacubitril/valsartan | 32 (22.4) | 37 (23.7) | 20 (25.6) |
| Any diuretics | 129 (90.2) | 134 (85.9) | 71 (90.0) |
| MRA | 107 (74.8) | 123 (78.8) | 57 (73.1) |
| CCB | 15 (10.5) | 31 (19.9) | 21 (26.9) § |
| Anti-thrombotic agents | 78 (54.5) | 96 (61.5) | 50 (64.1) |
| Statins | 52 (36.4) | 73 (46.8) § | 46 (59.0) §λ |
| Digoxin | 21 (14.7) | 32 (20.5) | 15 (19.2) |

Data are presented as mean ± SD, media (Q1–Q3) or number (percentage)

One-way analysis of variance test: * P-value < 0.017 versus no DM cohort. † P-value < 0.017 versus DM not on insulin cohort. Kruskal-Wallis test: & P-value < 0.05 versus no DM cohort. # P-value < 0.05 versus DM not on insulin cohort. Chi-square test (Fisher's exact test): § P-value < 0.05 versus no DM cohort. λ P-value < 0.05 versus DM not on insulin cohort

Abbreviations: DM, diabetes mellitus; BMI, body mass index; SBP, systolic blood pressure; DBP, diastolic blood pressure; HR, heart rate; HF, heart failure; NYHA, New York Heart Association; HT, hypertension; CAD, coronary artery disease; AF, atrial fibrillation; COPD, chronic obstructive pulmonary disease; SAS, sleep apnea syndrome;

NT-proBNP, amino-terminal pro-B-type natriuretic peptide; eGFR, estimated glomerular filtration rate; TPN-T, Troponin T; FBG, fasting blood glucose; HbA1C, glycated hemoglobin; TG, triglycerides; TC, cholesterol; HDL-C, high-density lipoprotein cholesterol content; LDL-C, low-density lipoprotein cholesterol content. ACEI, angiotensin converting enzyme inhibitor; ARB, angiotensin receptor blocker; MRA, mineralocorticoid receptor antagonist; CCB, calcium-channel blocker

Table 2 Oral hypoglycemic treatment in the diabetic cohort

| | DM treat- ment with- out insulin (n=156) | DM treat- ment with insulin (n=78) | P-value |
|--------------------------|---|---|---------|
| Metformin | 58 (37.2) | 25 (32.1) | P=0.440 |
| Sulfonylureas | 31 (19.9) | 17 (21.8) | P=0.731 |
| α-Glucosidase inhibitors | 41 (26.3) | 21 (26.9) | P=0.917 |
| SGLT-2 | 47 (30.1) | 32 (41.0) | P=0.097 |
| DPP-4 inhibitors | 10 (6.4) | 8 (10.3) | P=0.298 |

Data are presented as number (percentage)

Abbreviations: DM, diabetes mellitus; α-GI, α-Glucosidase inhibitors; SGLT-2, sodium-glucose cotransporter-2 inhibitors; DPP-4 inhibitors, dipeptidyl peptidase 4 inhibitors

insulin-requiring subjects demonstrated a higher 3D-SI than diabetic subjects not taking insulin or those without diabetes (DM on insulin: 0.63 ± 0.15 vs. DM not on insulin: 0.57 ± 0.14 vs. non-DM: 0.55 ± 0.13 ; $P=0.001$; Fig. 1). More details can be found in Table 3.

As shown in Fig. 2, deterioration of the magnitude of LV global longitudinal PS was greatest in insulin-treated patients with T2DM, intermediate in non-insulin-treated patients with T2DM, and lowest in non-DM patients (DM on insulin: $-4.2\% \pm 1.5\%$ vs. DM not on insulin: $-5.0\% \pm 2.2\%$ vs. non-DM: $-6.4\% \pm 2.4\%$; $P<0.001$). T2DM patients on insulin treatment exhibited more severe impairment in the magnitude of LV global circumferential PS than T2DM patients not taking insulin or patients without T2DM (DM on insulin: $-6.1\% \pm 2.2\%$ vs. DM

not on insulin: $-7.3\% \pm 3.2$ vs. non-DM: $-7.6\% \pm 3.3\%$; $P=0.007$). Nevertheless, a nonsignificant trend was found for the magnitude of LV global radial PS across groups (DM on insulin: $9.5\% \pm 5.2\%$ vs. DM not on insulin: $8.9\% \pm 4.5\%$ vs. non-DM: $7.9\% \pm 3.3\%$; $P=0.104$).

Univariable linear regression analysis of the whole study population showed that obesity; the presence of HT, coronary artery disease and T2DM; insulin use; NT-proBNP; eGFR and indexed LVM were associated with impaired longitudinal PS (all $P<0.05$). After multivariable adjustment, the presence of T2DM and insulin use remained independent determinants of impaired longitudinal PS (T2DM: multivariable $\beta=0.18$, $P<0.01$; insulin use: multivariable $\beta=0.13$, $P<0.05$). Likewise, a similar association was observed for circumferential PS when adjusted for the same variables (T2DM: multivariable $\beta=0.10$, $P<0.05$; insulin use: multivariable $\beta=0.16$, $P<0.01$) (Table 4).

Association between insulin treatment and adverse outcomes

The entire study cohort was observed for a median of 32.4 months (IQR, 15.6–43.2 months). During the follow-up period, the primary composite outcome, which included 41 HF readmissions (10.9%), 13 all-cause deaths (3.4%) and 5 heart transplantations (1.3%), occurred in 59 patients (15.6%). The proportion of patients experiencing an adverse event was significantly higher in the T2DM group that received insulin than in either the

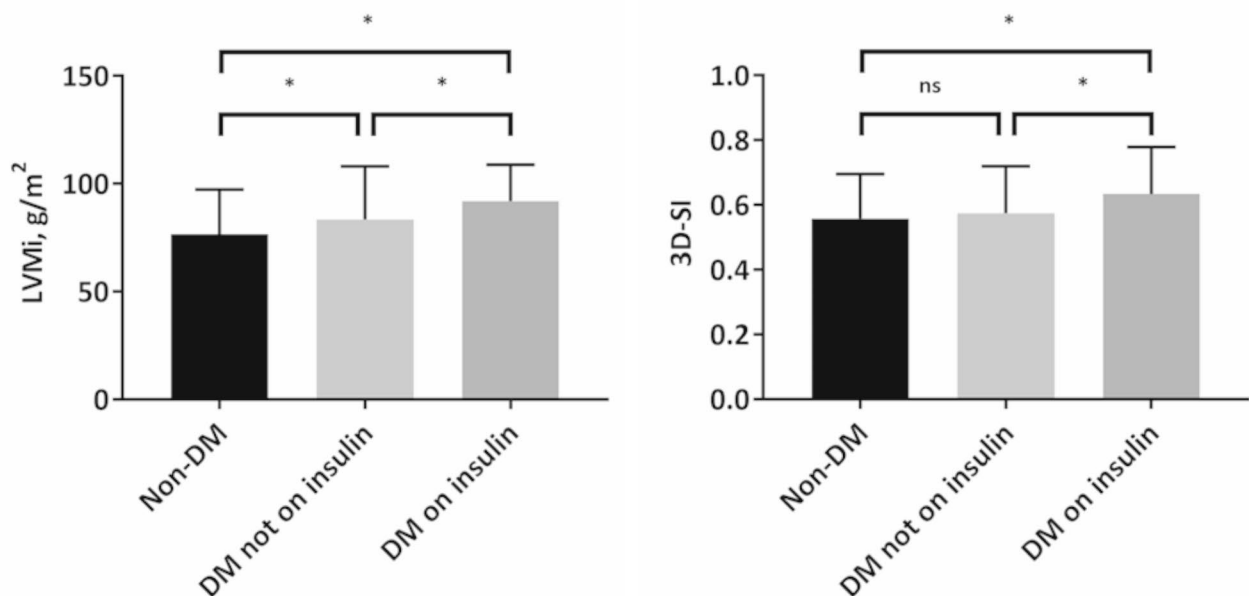


Fig. 1 Differences of indexed left ventricular mass and 3D-SI across the groups. Abbreviations: LVMi, indexed left ventricular mass; 3D-SI, three-dimensional spherical index; DM, diabetes mellitus; ns, no statistical significance; *, P-value < 0.017

Table 3 LV geometry and function of the study population

| | Non-DM (n = 143) | Non-insulin-treated DM (n = 156) | Insulin-treated DM (n = 78) |
|--------------------------------|----------------------|----------------------------------|-----------------------------|
| LVEDV, mL | 259.1 (202.7, 320.5) | 267.3 (197.2, 312.9) | 282.2 (210.8, 351.5) &# |
| LVEDV index, mL/m ² | 155.1 ± 42.6 | 153.4 ± 48.8 | 173.6 ± 69.5*† |
| LVESV, mL | 189.8 (137.1, 252.6) | 193.8 (137.8, 247.1) | 211.7 (149.7, 284.7) &# |
| LVESV index, mL/m ² | 117.7 ± 41.0 | 116.2 ± 45.9 | 131.3 ± 63.7 |
| LVSV, mL | 62.9 ± 22.9 | 61.5 ± 23.8 | 71.1 ± 26.9*† |
| LVSV index, mL/m ² | 37.4 ± 10.9 | 36.1 ± 10.1 | 40.9 ± 12.7 |
| LVEF, % | 25.7 ± 8.6 | 25.2 ± 9.0 | 25.2 ± 9.2 |
| LVM, g | 127.4 ± 37.1 | 145.4 ± 39.8* | 164.2 ± 36.2*† |
| LVM index, g/m ² | 76.6 ± 20.7 | 83.5 ± 24.6* | 92.7 ± 16.8*† |
| LVEDD, mm | 64.3 ± 6.7 | 64.7 ± 6.1 | 65.2 ± 6.3 |
| LVESD, mm | 51.3 ± 4.4 | 52.0 ± 5.6 | 50.5 ± 5.9 |
| LV length, mm | 96.7 ± 12.1 | 97.3 ± 11.2 | 100.2 ± 10.8 |
| 3D-SI | 0.55 ± 0.13 | 0.57 ± 0.14 | 0.63 ± 0.15*† |

Data are presented as mean ± SD, or media (Q1–Q3).

One-way analysis of variance test: * P-value < 0.017 versus no DM cohort. † P-value < 0.017 versus DM not on insulin cohort. Kruskal-Wallis test: & P-value < 0.05 versus no DM cohort. # P-value < 0.05 versus DM not on insulin cohort

Abbreviations: LV, left ventricular; DM, diabetes mellitus; LVEDV, left ventricular end-diastolic volume; LVESV, left ventricular end-systolic volume; LVSV, left ventricular stroke volume; LVEF, left ventricular ejection fraction; LVM, left ventricular mass; LVEDD, left ventricular end-diastolic dimension; LVESD, left ventricular end-systolic dimension; 3D-SI, three-dimensional spherical index

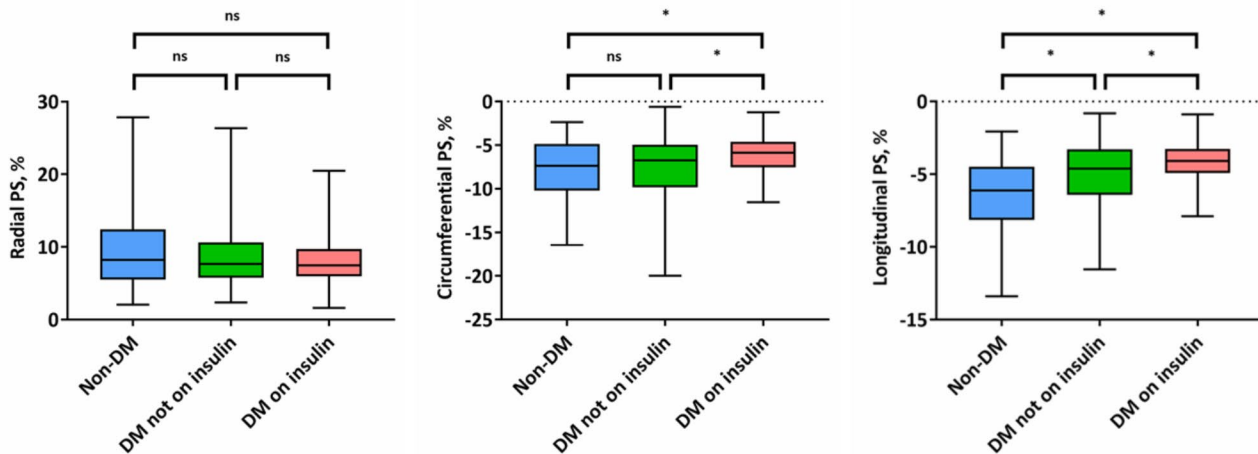


Fig. 2 Differences of magnitude of global left ventricular systolic PS across the groups. Abbreviations: DM, diabetes mellitus; PS, peak strain; ns, no statistical significance; *, P-value < 0.017

T2DM group that did not receive insulin or the non-DM group (29.5% vs. 15.4% vs. 8.4%; P=0.004). Detailed event data in the three groups are shown in Fig. 3. By Kaplan–Meier survival analysis, T2DM patients prescribed insulin showed worse long-term outcomes during follow-up (log-rank P<0.001; Fig. 3).

On Cox multivariable analysis, T2DM patients prescribed insulin had a 3-fold increase in the risk of primary composite outcome compared with non-DM patients (HR=3.11; 95% CI, 1.45–6.87; P=0.009), whereas T2DM patients not prescribed insulin had a 2-fold increase (HR=2.16; 95% CI, 1.06–4.40; P=0.015) after adjustment for baseline characteristics, etiology of

HF, NT-proBNP, eGFR, and utility of sacubitril/valsartan. (Table 5). Of note, when we performed Cox multivariable analysis separately in the T2DM group, insulin treatment remained associated with the primary composite outcome compared to those not treated with insulin (HR=2.85; 95% CI, 1.40–5.51; P=0.007) after adjustment for the abovementioned prognostic variables. Furthermore, despite the attenuated risk, the major confounders HbA1C and DM duration did not change the relationship between insulin treatment and adverse outcomes, with an adjusted HR of 2.16 (95% CI, 1.08–4.59; P=0.030) (Table 6).

Table 4 Linear regression analysis of the determination of impaired LV contractile function in overall cohort

| | Circumferential PS | | Longitudinal PS | |
|----------------------------------|-----------------------|-------------------------|-----------------------|-------------------------|
| | Uni-vari-able β | Mul-tivari-able β | Uni-vari-able β | Mul-tivari-able β |
| Age, per 10 units increase | 0.06 | | 0.02 | |
| Obesity#, yes or no | 0.18† | 0.20† | 0.20† | 0.12* |
| HT, yes or no | 0.04 | | 0.22† | |
| CAD, yes or no | 0.07 | | 0.19† | 0.15† |
| T2DM, yes or no | 0.12* | 0.10* | 0.34† | 0.18† |
| Insulin use, yes or no | 0.20† | 0.16† | 0.28† | 0.13* |
| NT-proBNP§, per 1 unit increase | 0.20† | 0.19† | 0.23† | 0.17† |
| eGFR, per 1 unit increase | -0.06 | | -0.11* | |
| Indexed LVM, per 1 unit increase | 0.20† | 0.16† | 0.26† | 0.18† |

β is adjusted regression coefficient

* P-value < 0.05. † P-value < 0.01

Subjects with body mass index ≥ 25 kg/m² were classified as obese group that proposed by the World Health Organization for Asian populations

§ NT-proBNP is log-transformed before being included in the regression analysis

Abbreviations: LV, left ventricular; PS, peak strain; HT, hypertension; CAD, coronary artery disease; DM, diabetes mellitus; NT-proBNP, amino-terminal pro-B-type natriuretic peptide; eGFR, estimated glomerular filtration rate; LVM, left ventricular mass

Discussion

The present study highlights evidence supporting the need to consider the safety of insulin therapy before prescribing it to patients with HF_{rEF}. The main findings were as follows: (1) insulin usage in comorbid HF_{rEF} and T2DM seems to be associated with increased LV volume, aggravated LVH and spherical-like LV remodeling. (2) Despite a similar LVEF across groups, T2DM patients who took insulin displayed deteriorated LV contractility, with worse systolic PS in the longitudinal and circumferential directions. Insulin treatment was the independent determinant of the reduced magnitude of global longitudinal and circumferential PS. (3) Finally, insulin treatment was found to be associated with an increased risk of adverse clinical outcomes in patients with HF_{rEF}, and

Table 5 Cox proportional hazards regression analysis to identify the association of DM status and insulin use with adverse outcomes in overall cohort

| | HR (95% CI) | P-value |
|---|------------------|-----------|
| Unadjusted model | | |
| Non-DM | 1.00 (reference) | |
| Non-insulin-treated DM | 2.82 (1.42–5.61) | P = 0.003 |
| Insulin-treated DM | 4.83 (2.39–9.74) | P < 0.001 |
| Model 1: adjusted for age, sex, BMI* and NYHA function class | | |
| Non-DM | 1.00 (reference) | |
| Non-insulin-treated DM | 2.59 (1.29–5.21) | P = 0.008 |
| Insulin-treated DM | 4.41 (2.14–9.07) | P < 0.001 |
| Model 2: adjusted for model 1 combined with etiology of HF | | |
| Non-DM | 1.00 (reference) | |
| Non-insulin-treated DM | 2.58 (1.28–5.20) | P = 0.007 |
| Insulin-treated DM | 4.45 (2.16–9.15) | P < 0.001 |
| Model 3: adjusted for model 2 combined with NT-proBNP§, eGFR, and use of sacubitril/valsartan | | |
| Non-DM | 1.00 (reference) | |
| Non-insulin-treated DM | 2.16 (1.06–4.40) | P = 0.015 |
| Insulin-treated DM | 3.11 (1.45–6.87) | P = 0.009 |

* BMI is considered as binary variable (BMI ≥ 25 kg/m²) when including in the Cox model

§ NT-proBNP is log-transformed before being included in the Cox model

Abbreviations: DM, diabetes mellitus; HR, hazards ratio; CI, confidence interval; BMI, body mass index; NYHA, New York Heart Association; NT-proBNP, amino-terminal pro-B-type natriuretic peptide; eGFR, estimated glomerular filtration rate

this association persisted regardless of DM status and duration.

Role of insulin in the development of adverse LV remodeling

Insulin has long been used as a second-line therapy to manage T2DM when oral hypoglycemic drugs fail to achieve the targeting glycemic level. Insulin usage among high-risk patients has the advantage of protecting against glucotoxicity that may lead to diabetes-related microvascular complications [6, 11]. However, one of the potential adverse effects of insulin in HF is that it contributes to sodium and water retention, which may exacerbate cardiac decompensation [16]. Our study, which included

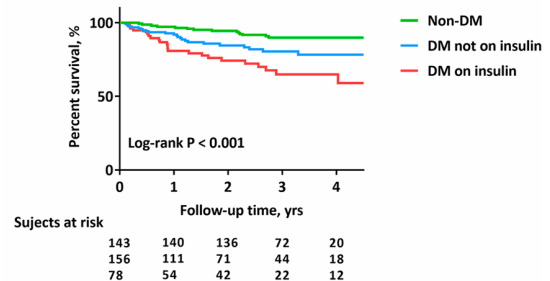
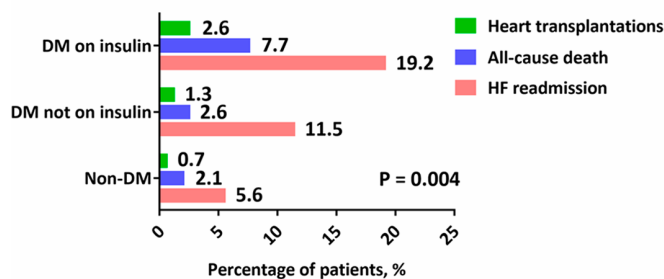


Fig. 3 Prevalence of adverse outcomes and survival curves during a median follow-up of 2.7 years. Abbreviations: HF, heart failure; DM, diabetes mellitus

Table 6 Cox proportional hazards regression analysis to identify the association between insulin use and adverse outcomes in DM cohort

| | HR (95% CI) | P-value |
|---|------------------|-----------|
| Unadjusted model | | |
| Non-insulin-treated DM | 1.00 (reference) | |
| Insulin-treated DM | 3.01 (1.66–5.44) | P < 0.001 |
| Model 1: adjusted for age, sex, BMI* and NYHA function class | | |
| Non-insulin-treated DM | 1.00 (reference) | |
| Insulin-treated DM | 2.94 (1.62–5.33) | P < 0.001 |
| Model 2: adjusted for model 1 combined with etiology of HF | | |
| Non-insulin-treated DM | 1.00 (reference) | |
| Insulin-treated DM | 2.93 (1.61–5.34) | P < 0.001 |
| Model 3: adjusted for model 2 combined with NT-proBNPs, eGFR, and use of sacubitril/valsartan | | |
| Non-insulin-treated DM | 1.00 (reference) | |
| Insulin-treated DM | 2.85 (1.40–5.51) | P = 0.007 |
| Model 4: adjusted for model 3 combined with HbA1C and DM duration | | |
| Non-insulin-treated DM | 1.00 (reference) | |
| Insulin-treated DM | 2.16 (1.08–4.59) | P = 0.030 |

* BMI is considered as binary variable ($BMI \geq 25 \text{ kg/m}^2$) when including in the Cox model

§ NT-proBNP is log-transformed before being included in the Cox model

Abbreviations as in Table 5

MRI assessment, showed that insulin treatment is associated with further LV dilatation and spherical-like remodeling in the setting of T2DM. The current findings could in turn explain the observations by Cosmi et al., who reported that insulin-treated patients in an HFrEF cohort suffered from more signs of cardiac congestion as well as a more advanced NYHA functional class [10]. Thus, our study indicated a simple and effective MRI parameter that may be used as a marker of congestion and predictor of poor outcomes.

A more recent study reported that patients with comorbid HFrEF and T2DM exhibited higher LVM than nondiabetic patients [17]. Nevertheless, little is known about the reciprocal relationship between insulin treatment and LVM in HFrEF patients with T2DM. The present study extends this cardiac hypertrophy to a specific population in which patients with concomitant HFrEF and T2DM are prescribed insulin. We speculate that insulin itself could induce cardiomyocyte hypertrophy alongside myocardial fibrosis and collagen accumulation [18]. Whether the observed LVH in insulin-treated patients is reversible deserves further investigation.

Insulin use and LV contractile dysfunction

To the best of our knowledge, our study was the first to use strain analyses derived from MRI feature tracking to explore the effect of insulin use on changes in LV mechanics. In a CHS cohort study, Garg et al. observed that higher insulin secretion was associated with worse LV longitudinal systolic function in an older population

with prediabetes and diabetes [19]. In contrast, with regard to HFrEF comorbid with T2DM, data from this study displayed worse longitudinal and circumferential systolic strain values in individuals on insulin than in those not on insulin. More importantly, after considering the established variables that are linked to the magnitude of myocardial strain, insulin treatment remained associated with reduced systolic strain in the multivariable regression model in the overall cohort. This finding may reflect that insulin is detrimental to cardiomyocytes in HFrEF patients in the context of T2DM. Supporting evidence reveals that in addition to water and sodium retention, insulin-induced hypoglycemia could trigger widespread abnormal autonomic nervous system activation, systemic inflammation, oxidative stress, and a prothrombotic state, resulting in myocardial ischemia, overexpression of sodium-hydrogen exchangers, and microvasculature disturbance, thereby promoting cardiomyocyte injury and dysfunction [20–22].

Insulin treatment and adverse clinical outcomes

The relationship between insulin uses and adverse outcomes is not fully understood. In the context of prediabetes and established T2DM, analyses from large-scale clinical trials (ORIGIN and DEVOTE) of cardiovascular events in recent years revealed that the use of insulin did not lead to major cardiovascular outcomes or to increased HF hospitalization and HF recurrence [23–25]. Unfortunately, those subjects with advanced NYHA function class (III or IV) were not enrolled in these trials. Conversely, for HF, several observational studies reported an increased rate of adverse outcomes related to insulin therapy in patients with concurrent T2DM and HF [2, 7–11]. Indeed, since T2DM patients with insulin therapy generally have a longer duration of diabetes, undesirable glycemic control, and a higher risk of cardiovascular comorbidities and are often treated with insulin in combination with other oral antidiabetic therapies, these factors may be the major confounders in assessing the association between insulin use and adverse outcomes. More than that, the use of some specific medications for HF, such as sacubitril/valsartan, show evidence of providing cardiovascular benefits [26]. Instead, our study attempted to correct for the potential bias as much as possible. We found that even after adjustment for the duration of T2DM and level of glycemic control, the use of insulin in HFrEF patients to treat diabetes still led to a 2-fold increase in the risk of the primary composite outcome, indicating that the negative prognostic effect of insulin is unlikely to be changed. Insulin should be used with caution in the treatment of comorbid HFrEF and T2DM. Other alternative agents are preferred if adequate glycemic control can be achieved.

Study limitations

Several limitations have to be acknowledged in this study. First, due to the relatively small sample size of insulin-dependent patients and the adherence uncertainty of patients during the follow-up period, the usage and type of insulin were not considered in the current study. Further randomized trials should be conducted to address whether the dose or type of insulin is associated with LV systolic dysfunction. Second, we did not perform quantitative measurement of myocardial fibrosis in the study cohort. It would be interesting to explore the effect of insulin on the development of myocardial fibrosis using late gadolinium enhancement or extracellular volume derived from cardiac MRI. Third, since the incidence of all-cause death and heart transplantations in our cohort was low, we used a composite outcome to enhance the statistical power in our Cox multivariable analysis model. It is necessary to estimate the association between the use of insulin and risk of each clinical outcome. Finally, we must acknowledge the retrospective nature of this study and selecting bias is inevitable.

In conclusion, our study showed evidence of detrimental effects of insulin on adverse LV remodeling as well as systolic contractility in HFrEF patients with T2DM. In the context of HFrEF, the use of insulin to treat diabetes is associated with a higher risk of adverse outcomes, regardless of the greater severity of diabetes. Specific management strategies and close monitoring are needed when considering insulin treatment in patients with comorbid HFrEF and T2DM.

List of abbreviations

| | |
|-----------|---|
| HF | Heart failure |
| T2DM | Type 2 diabetes mellitus |
| LV | Left ventricular |
| HFrEF | Heart failure with reduced ejection fraction |
| NT-proBNP | Amino-terminal pro-B-type natriuretic peptide |
| ICCs | Intraclass correlation coefficients |
| EF | Ejection fraction |
| EDV | End-diastolic volume |
| ESV | End-systolic volume |
| LVM | Left ventricular mass |
| SV | Stroke volume |
| 3D-SI | Three-dimensional spherical index |
| PS | Peak strain |
| HT | Hypertension |
| HbA1C | Glycated hemoglobin |
| eGFR | Estimated glomerular filtration rate |

Acknowledgements

Not applicable.

Authors' contributions

K.S. and G.Z. interpreted the data and wrote the manuscript. H.F., S.H. and H.Y.X. analyzed the data and gave advice on data presentation. Y.G., R.S., W.F.Y. and W.L.Q. collected the data. Y.L., Y.K.G. and Z.G.Y. participated in the study design. K.S., Y.K.G. and Z.G.Y. revised the manuscript. All authors read and approved the final manuscript.

Funding

This study was financially supported by the National Natural Science Foundation of China (81771887, 81971586, 82120108015) and the 1–3–5

project for disciplines of excellence of West China Hospital, Sichuan University (ZYGD18013).

Data Availability

The datasets used and/or analyzed during the current study are available from the corresponding author on reasonable request.

Declarations

Competing interests

The authors declare no competing interests.

Ethics approval and consent to participate

This study was approved by the Biomedical Research Ethics Committees of West China Hospital and was complied with the Declaration of Helsinki. Written informed consent was waived because of the retrospective nature of the study.

Consent for publication

Not applicable.

Received: 2 April 2023 / Accepted: 27 July 2023

Published online: 04 August 2023

References

- McDonagh TA, Metra M, Adamo M, et al. 2021 ESC Guidelines for the diagnosis and treatment of acute and chronic heart failure. *Eur Heart J*. 2021;42(36):3599–726.
- Lawson CA, Jones PW, Teece L, et al. Association between type 2 diabetes and all-cause hospitalization and mortality in the UK general heart failure population: stratification by diabetic glycemic control and medication intensification. *JACC Heart Fail*. 2018;6(1):18–26.
- Vijayakumar S, Vaduganathan M, Butler J. Glucose-lowering therapies and heart failure in type 2 diabetes mellitus: mechanistic links, clinical data, and future directions. *Circulation*. 2018;137(10):1060–73.
- Gilbert RE, Krum H. Heart failure in diabetes: effects of anti-hyperglycaemic drug therapy. *Lancet*. 2015;385(9982):2107–17.
- Dunlay SM, Givertz MM, Aguilar D, et al. Type 2 diabetes mellitus and heart failure: a scientific statement from the American Heart Association and the heart failure society of America: this statement does not represent an update of the 2017 ACC/AHA/HFSA heart failure guideline update. *Circulation*. 2019;140(7):e294–e324.
- Karwi QG, Ho KL, Pherwani S, Ketema EB, Sun Q, Lopaschuk GD. Concurrent diabetes and heart failure: interplay and novel therapeutic approaches. *Cardiovasc Res*. 2022;118(3):686–715.
- Hippisley-Cox J, Coupland C. Diabetes treatments and risk of heart failure, cardiovascular disease, and all-cause mortality: cohort study in primary care. *BMJ*. 2016;354:i3477.
- Cooper LB, Mi X, Mentz RJ, Green JB, Anstrom KJ, Hernandez AF, Curtis LH. Management of newly treated diabetes in Medicare beneficiaries with and without heart failure. *Clin Cardiol*. 2017;40(1):38–45.
- Kristensen SL, Mogensen UM, Jhund PS, et al. Clinical and echocardiographic characteristics and cardiovascular outcomes according to diabetes status in patients with heart failure and preserved ejection fraction: a report from the I-PRESERVE trial (Irbesartan in Heart failure with preserved ejection fraction). *Circulation*. 2017;135(8):724–35.
- Cosmi F, Shen L, Magnoli M, et al. Treatment with insulin is associated with worse outcome in patients with chronic heart failure and diabetes. *Eur J Heart Fail*. 2018;20(5):888–95.
- Shen L, Rørth R, Cosmi D, et al. Insulin treatment and clinical outcomes in patients with diabetes and heart failure with preserved ejection fraction. *Eur J Heart Fail*. 2019;21(8):974–84.
- Murphy SP, Ibrahim NE, Januzzi JL Jr. Heart failure with reduced ejection fraction: a review. *JAMA*. 2020;324(5):488–504.
- Shi K, Yang MX, Huang S, et al. Effect of diabetes mellitus on the development of left ventricular contractile dysfunction in women with heart failure and preserved ejection fraction. *Cardiovasc Diabetol*. 2021;20(1):185.

14. Liang Y, Li W, Zeng R, et al. Left ventricular spherical index is an independent predictor for clinical outcomes in patients with nonischemic dilated cardiomyopathy. *JACC Cardiovasc Imaging*. 2019;12(8 Pt 1):1578–80.
15. Xu J, Yang W, Zhao S, Lu M. State-of-the-art myocardial strain by CMR feature tracking: clinical applications and future perspectives. *Eur Radiol*. 2022;32(8):5424–35.
16. Kenny HC, Abel ED. Heart failure in type 2 diabetes mellitus. *Circ Res*. 2019;124(1):121–41.
17. Zhang G, Shi K, Yan WF, et al. Effects of diabetes mellitus on left ventricular function and remodeling in hypertensive patients with heart failure with reduced ejection fraction: assessment with 3.0 T MRI feature tracking. *Cardiovasc Diabetol*. 2022;21(1):69.
18. Ceriello A, Catrinou D, Chandramouli C, et al. Heart failure in type 2 diabetes: current perspectives on screening, diagnosis and management. *Cardiovasc Diabetol*. 2021;20(1):218.
19. Garg PK, Biggs ML, Kizer JR, et al. Glucose dysregulation and subclinical cardiac dysfunction in older adults: the Cardiovascular Health Study. *Cardiovasc Diabetol*. 2022;21(1):112.
20. Jang SY, Jang J, Yang DH, et al. Impact of insulin therapy on the mortality of acute heart failure patients with diabetes mellitus. *Cardiovasc Diabetol*. 2021;20(1):180.
21. Standl E, Stevens SR, Lohknygina Y, et al. Confirming the bidirectional nature of the association between severe hypoglycemic and cardiovascular events in type 2 diabetes: insights from EXSCEL. *Diabetes Care*. 2020;43(3):643–52.
22. Packer M. Differential pathophysiological mechanisms in heart failure with a reduced or preserved ejection fraction in diabetes. *JACC Heart Fail*. 2021;9(8):535–49.
23. Investigators ORIGINT, Gerstein HC, Bosch J, et al. Basal insulin and cardiovascular and other outcomes in dysglycemia. *N Engl J Med*. 2012;367(4):319–28.
24. Marso SP, McGuire DK, Zinman B, et al. Efficacy and safety of degludec versus glargine in type 2 diabetes. *N Engl J Med*. 2017;377(8):723–32.
25. Gerstein HC, Jung H, Rydén L, et al. Effect of basal insulin glargine on first and recurrent episodes of heart failure hospitalization: the ORIGIN trial (outcome reduction with initial glargine intervention). *Circulation*. 2018;137(1):88–90.
26. Docherty KF, Vaduganathan M, Solomon SD, McMurray JJV. Sacubitril/valsartan: neprilysin inhibition 5 years after PARADIGM-HF. *JACC Heart Fail*. 2020;8(10):800–10.

Publisher's Note

Springer Nature remains neutral with regard to jurisdictional claims in published maps and institutional affiliations.